

May 2010

Alfred Berg USA

Market Review

Markets sold off considerably in May, after posting strong gains since February. Volatility spiked sharply higher, as markets digested the Greek debt situation and its effect on the global recovery. Investors again became risk-sensitive and sought safety in U.S. Treasuries. Regulatory reform, which could significantly dampen future bank profits, weighed heavily on financials and the market.

Markets remain caught in a tug of war between reasonably strong economic fundamentals and escalating threats of external shocks. In the United States, the overall economic picture continues to be generally good. Manufacturing and construction data have recently come in stronger than expected, corporate earnings remain a positive force, consumer and business confidence levels continue to be resilient and inflation pressures remain absent. There also continue to be disappointments, highlighted by the May employment report. Although the headline number of 431,000 new jobs was certainly a positive, the vast majority came about from temporary census hiring, and private-sector jobs growth was quite weak. On balance, we continue to expect improvements in private sector hiring and believe that overall economic growth should be decent in the second quarter.

Despite the generally positive backdrop, markets have been driven lower in recent weeks due to heightened uncertainty surrounding a number of issues. Escalating geopolitical tensions in the Middle East have rattled some nerves, Chinese policy tightening has raised the possibility of an interruption in global growth, the credit crisis in Europe remains a problem, and the end game surrounding the oil spill in the Gulf of Mexico remains a wildcard. On that latter point, the oil spill could become a catalyst for far-reaching regulatory and/or legislative changes that could have a significant impact on the future of the energy industry, and the surrounding uncertainty has many investors concerned. Despite the negative tenor of these events, we believe the financial stress in the system should be better controlled than it was in 2008, and we are not expecting a return to the conditions that plagued the global economy and financial markets two years ago. Central banks are still operating under many of the facilities put into place then, and the banking system as a whole has benefited from deleveraging, write-down and capital rebuilding. Additionally, the overall magnitude of sovereign debt exposures is significantly smaller than that of the mortgage-related holdings that ultimately provoked the 2008 credit crisis.

In May, growth stocks outperformed value stocks – however, for the year-to-date, value has led, with a gain of 1.13%, compared with a negative 1.74% return for growth.

All ten sectors of the MSCI USA Index lost money in May. The best relative performers were classic defensive sectors; consumer staples and utilities. The energy sector, reflecting softening oil and natural-gas prices, was the biggest loser, down more than 13.5%. For the year-to-date, the consumer-discretionary sector is the performance leader, up about 8%, and three of the nine sectors are in positive territory.

Outlook

The philosophy and process of this fund remains disciplined and consistent. Our systematic fundamental screens focused on quality, valuation and momentum identify compelling opportunities and our research team then completes an exhaustive fundamental review focusing on the sustainable earnings growth potential of each company. The result is a portfolio that has very modest sector exposure, relative to the Russell 1000 Growth, but where individual stock selection will determine our success.

Alfred Berg USA focuses on creating a long-term return based on investments in highly liquid shares. The best investment themes in the US investment universe are selected, and the companies are weighted accordingly in an overall portfolio.

The focus is on growth and quality companies where growth potential is above average relative to competitors. Our portfolio managers selected around 35-40 companies with a convincing performance, which represents the best investment ideas at the current moment.

FUND FEATURES

Inception:	December 15 1994
Benchmark:	MSCI USA (DKK)
ISIN:	DK0015861652

May 2010

Alfred Berg USA

The critical question for investors is, can the recovery continue, or will it stall, leading to a double-dip? The consumer has shown strength, with retail sales pushing 0.40-percent higher in April, after a revised 2.10-percent increase in March. Consumer confidence is at a two-year high. The market sell-off could impact consumer confidence, but, for the time being, the consumer is helping to support the improving economy.

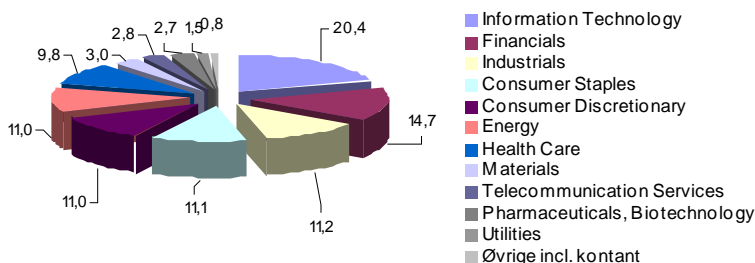
In short, the economic outlook is improving, but there are concerns that growth will slow. It is critical that we add jobs to help fuel future growth and spending; an unemployment rate of 9.90 percent may threaten recovery.

From our perspective, as long as the world economy does not sink back into recession (an event we consider unlikely), equity markets should be able to weather the current period of uncertainty. The economic recovery should continue, although we expect the pace to be relatively slow and interrupted along the way by periods of disappointing data. We believe investors will need to see a recovery in European debt markets and evidence that contagion can be contained before confidence can be restored.

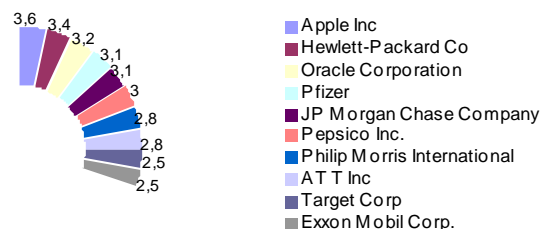


PORTFOLIO COMPOSITION (31.05.2010)

Section breakdown

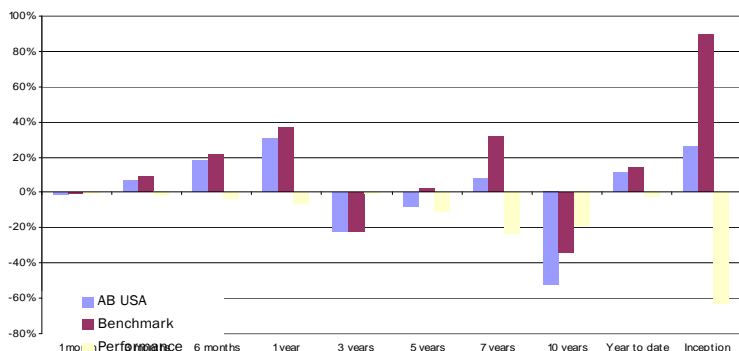


Ten largest holdings



PERFORMANCE IN DKK (31.05.2010)

Period	AB USA	Benchmark	Performance
1 month	-0,9%	-0,6%	-0,3%
3 months	7,3%	9,6%	-2,2%
6 months	18,4%	21,8%	-3,4%
1 year	30,5%	36,7%	-6,2%
3 years	-21,9%	-21,7%	-0,2%
5 years	-8,0%	2,9%	-10,8%
7 years	8,1%	31,3%	-23,2%
10 years	-52,8%	-33,7%	-19,0%
Year to date	11,6%	14,2%	-2,7%
Inception	26,5%	89,3%	-62,8%



RISK INDICATORS (31.05.210)

	Last 12M	Last 36M	Last 60M
Fund Volatility (%)	11,75	18,11	15,12
Benchmark Volatility (%)	10,61	17,92	15,1
Tracking Error (%)	2,87	3,44	3
Information Ratio	-2,16	-0,02	-0,74
Sharpe Ratio	2,49	-0,61	-0,31

This document has been prepared solely for informational purposes and does not constitute 1) an offer to buy or sell or a solicitation of an offer to buy or sell any security or financial instrument mentioned in this document or 2) any investment advice. Any decision to invest in the securities described herein should be made after reviewing the prospectus, which can be obtained free of charge from Fortis Investments*. Prospective investors should conduct such investigations as the investor deems necessary and should seek their own legal, accounting and tax advice in order to make an independent determination of the suitability and consequences of an investment in the securities. Fortis Investments does not make any representation or warranty, express or implied, of any nature nor accepts any responsibility or liability of any kind with respect to the accuracy or completeness of the information contained herein. The information or opinions contained herein are subject to change without notice. Fortis Investments has no obligation to update or amend any information or opinions contained herein. Past performance is no indication of current or future performance. The performance data do not take account of the commissions and costs incurred on the issue and redemptions of units.